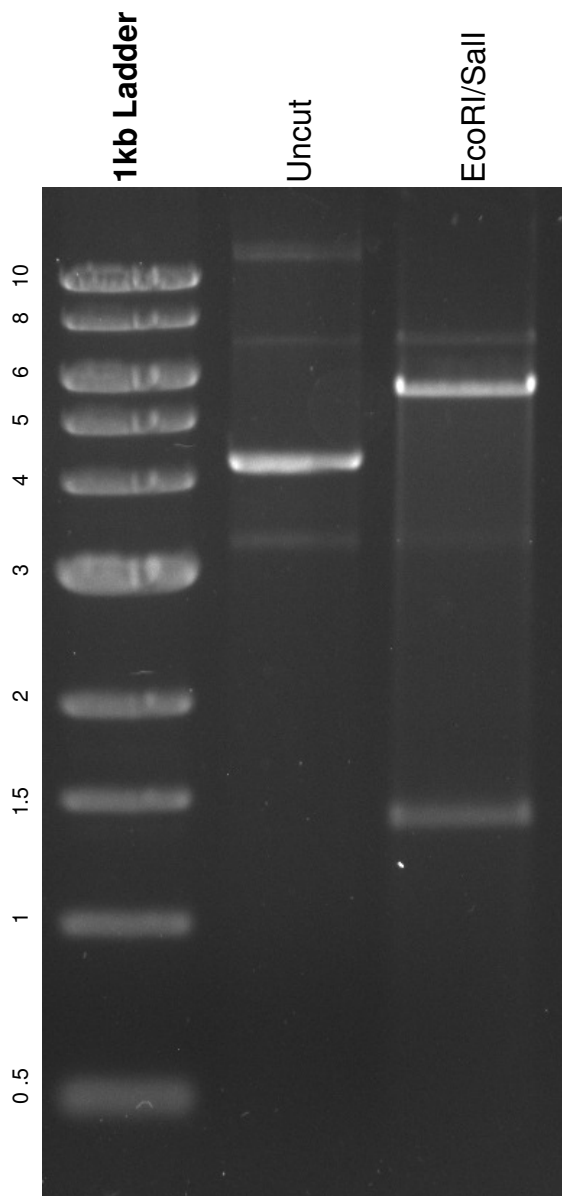


This gel depicts the NEB 1kb ladder and a digestion of the plasmid **pMIG-w** with the following enzymes: EcoRI/Sall double digest

12282
pMIG-w



DNA digested with **EcoRI/Sall** for **1** hour
Gel: 0.8% TAE stained with 100 ml 1X TAE and 5uL of ethidium bromide
Ran for 1 hour 20 minutes at **80** volts